

### Division 3 – Horticulture

#### Class 3 – Collage Dotted Plants

- A Hanging
- B Standing

No pot larger than 8"

#### Class 6 – Flowering Potted Plants

- A Hanging
- B Standing

No pot larger than 8"

### Division 4 – For Children Only

Any flower or plant material will be fresh

Only 1 entry per person in each class

Exhibitors must furnish their own vases. No beer cans, wine or soda bottles

#### Class 1 – Masquerade

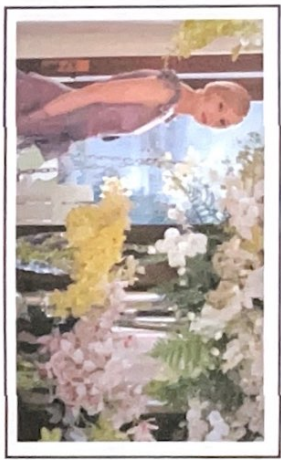
A fresh flower design featuring an elaborate party mask. Not to exceed 10" deep x 10" wide x 24" tall.

- A Ages 3-5
- B Ages 6-10
- C Ages 11-15

#### Class 2 - Classic Candlelight

A crystal candleholder decorated with dried or artificial flowers. You may also use other 1920's embellishments. Not to exceed 8" wide x 8" deep x 18" high, not including the candle.

- A Ages 3-5
- B Ages 6-10
- C Ages 11-15



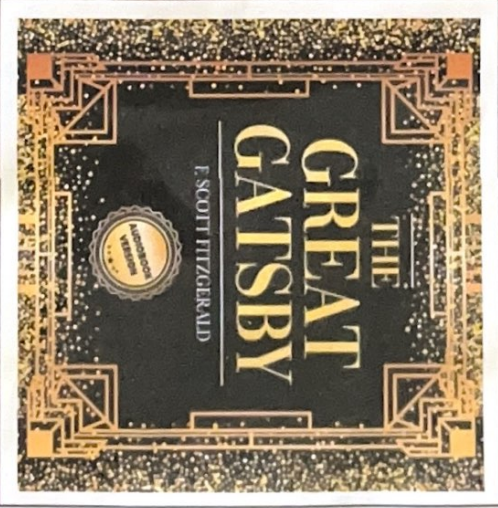
This is a community Flower Show, and all ages and abilities are invited to participate.

Classes and divisions are subject to change. Please check the website in early summer of 2024 for final categories.

For more information about the Franklin County Field Days, please log onto [www.franklincountyfielddays.org](http://www.franklincountyfielddays.org) for the Design and Horticulture Show.

# The Great Gatsby

Franklin County Field Days 2024 Flower Show



Exhibits will be registered on Wednesday afternoon and evening, between 12:00pm and 6:00pm. You may drop off your exhibits earlier on Wednesday at your own risk. The exhibits may be moved if dropped earlier than 12:00pm.

We are not responsible for lost or broken arrangements, or items used with the design. Please do not use valuable containers and embellishments.

Exhibits will be judged starting at 6:15pm on Wednesday evening. NO exhibitors are allowed in the judging area once judging begins. The decision of the judge(s) will be considered final.

All entries MUST stay on display until 5:00pm on Sunday. All premiums are forfeited if not picked up by 5:15pm. All unclaimed flower arrangements will be disposed of if not picked up by 5:15pm.



## Division 1 – Flower Designs

- Any exhibitor may enter as many classes as desired, but only 1 entry per class.
- Each design must be the work of 1 individual.
- All entries must contain fresh plant materials, except class 5.
- Fresh plant material cannot be treated or embellished in any way, unless noted in class description.
- Flowers on the State of VT endangered or invasive plant list are not allowed.
- The Franklin County Field Days and its representatives are not responsible for lost, broken or stolen items. Please do not use valuable or irreplaceable items in your designs.

### Class 1 – Art Deco Design

- A large, art deco design in black and white. You may use artificial embellishments to achieve a period design. Not to exceed 20" long, 12" wide and 18" high.

### Class 2 – Daisy Enchannan

- A fresh flower arrangement with daisies and the primary flower. No size restrictions.

### Class 3 – The Ecaring 20s

- A small, gold or silver metallic vase design of fresh flowers, featuring feathers and pearls. Not to exceed 12" long x 8" wide x 18" tall.

### Class 4 – The Chilled Age

- A fresh flower design in a champagne glass. Not to exceed 6" wide x 6" deep x 14" high.

### Class 5 – Summer in the Ramppans

- A floral embellished photo frame using dried or artificial flowers. Please include a 1920's era photo in your frame. Frame not to exceed 8" x 10".

### Class 6 – The Age of Jazz

- A fresh flower/foilage design featuring a musical note in the design. Not to exceed 10" deep x 10" wide x 24" tall.

### Class 7 – Top Hat Topiary

- A masculine topiary design of fresh flowers/foilage set in a black, silver or gold top hat. You may also use other 1920's embellishments. Not to exceed 12" wide x 12" deep x 18" high.

## Division 2 – Horticulture

- All flowers or plants shall be grown by the exhibitor for at least 8 weeks.
  - No wires permitted above the flower line.
  - No artificial color allowed.
  - Only 1 entry per class, per subclass. For example, you may enter 1 entry in Class 1 A, 1 entry in Class 1 B, 1 entry in Class 1 C, etc.
  - Each entry should be 1-3 stems with no leaves below the water line.
  - Exhibitors will furnish their own vases. No beer cans, wine or soda bottles.
- Class 1 – Annuals
- |   |                |
|---|----------------|
| A | Salvia         |
| B | Petunia        |
| C | Mangold        |
| D | Snapdragon     |
| E | Zinnia – Dwarf |
| F | Zinnia – Large |

G Geranium  
H Cleome  
I Other

### Class 2 – Perennials

A Daylily  
B Rose  
C Balloon Flower  
D Hollyhock  
E Foxglove  
F Daisy  
G Phlox  
H Sweet William  
I Black Eyed Susan  
J Bee Balm  
K Echinacea  
L Yarrow  
M Rose Mallow  
N Hosta Leaf  
O Liatris  
P Sedum  
Q Hydrangea  
R Other

### Class 3 – Bulbs

A Dahlia  
B Gladiolas  
C Lily  
D Other

### Class 4 – Cut Herbs

A All herbs will be judged